

Installation Kits

Description

The family of portable Installation Kits from Highfield is engineered to provide operating field personnel with a safe, efficient, lightweight tool for punching holes in ringless meter sockets, wiring troughs, CT cabinets and other assorted enclosures in your system.

Constructed of cold rolled steel and insulated for installer safety, the tool is designed to automatically locate the single mounting hole required for installation of external locking devices on these various enclosures.

Punch and die components are hardened tool steel.

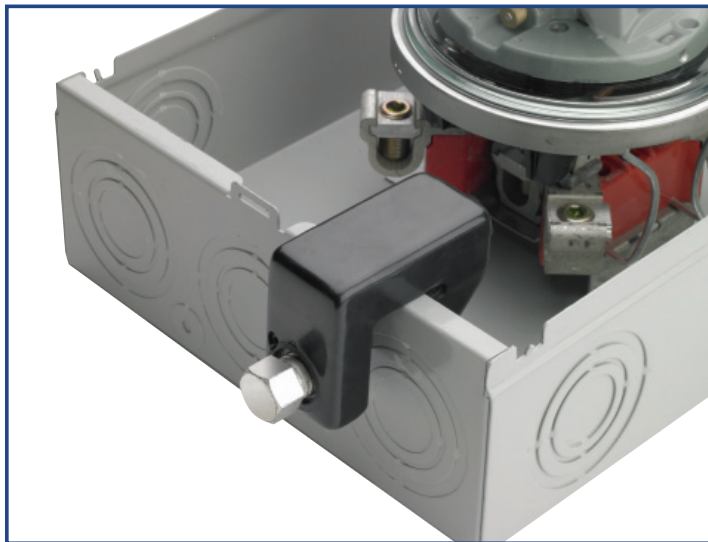
Benefits/Advantages

- ◆ Small size allows service personnel to carry kit easily.
- ◆ No longer necessary to remove meter socket covers from the premises for punching, or purchase replacement covers.
- ◆ Need for electric drill and external power sources eliminated. Kit automatically locates and punches the single mounting hole required, without template or measuring tool.
- ◆ Replacement components (punches and dies) readily changeable with worn components.
- ◆ Insulated for installer's safety.
- ◆ Set screw provided for added stability during installation.



93389002

93389006



Installation Kit

Technical Data

Part Numbers	Description	Style Enclosure	Kit Part No.	Hole Diameter	Screw Hex. Size	Max. Enclosure Flange Width	Locating Dim *
93389002	Installation Kit - Flangeless Sockets	CT Cabinets	93389007	1 ³ / ₃₂ "	1 ¹ / ₈ "	1"	1.300
93389006	Installation Kit - Flanged Sockets	Flanged Sockets	93389006	1 ³ / ₃₂ "	7/ ₈ "	5/ ₈ "	1.125
93389007	Installation Kit - CT Cabinets	Flangeless Sockets	93389002	1 ³ / ₃₂ "	7/ ₈ "	-	1.125
93380289	Replacement Ram Screw Assembly	* Note: Locating dimension is from the front (exposed) edge of the enclosure with the door off, to the center line of the punched hole.					
93380281	Replacement Punch						
93380282	Replacement Die						