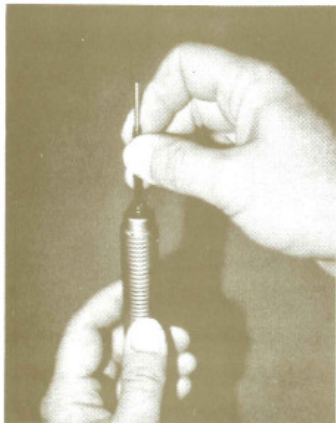
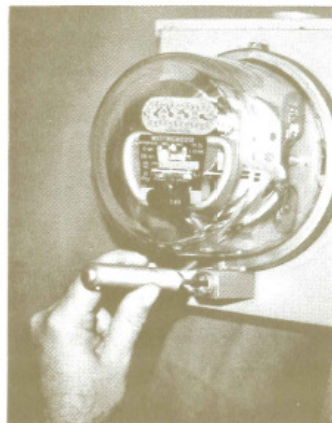


Lock Extractor Kit Sequence of Operation

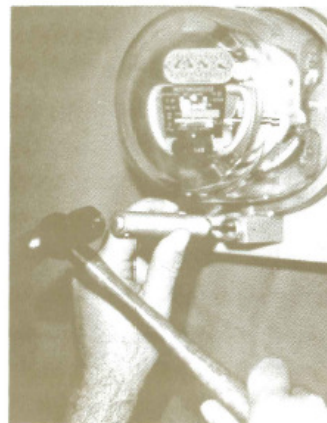
1. Screw the *extractor element* into the nose of the threaded *puller rod* finger tight.
2. Insert the tip of the *extractor element* into the key hole of the barrel lock.
3. While continuing to guide the *extractor assembly* into the key hole of the lock, and holding the locking hardware steady, tap the *extractor assembly* fully into the lock until it bottoms (approximately 1" to 1 1/2").
4. Slide the *sleeve* over the threaded *puller rod* until it butts against the hardware containing the lock. If the hardware is manufactured with a *seal ferrule*, the inside diameter of the *sleeve* will fit over the outside diameter of the *seal ferrule*.
5. Thread the *nut* onto the *puller rod* until it becomes finger tight against the *sleeve*.
6. Insert the *tee handle* through the cross hold in the shank of the *puller rod*. While holding the entire assembly steady with the *tee handle*, begin turning the *nut* with the *wrench* in a *clockwise* direction. If the *puller rod* is allowed to rotate, the *extractor element* may snap; therefore, make certain the *tee handle* is held firmly in position.
7. Continue to turn the *nut* slowly until the lock is pulled clear of the lock device.
8. Slide the *sleeve* forward over the lock and off the *threaded puller rod*. Unscrew the *extractor element* and the attached lock and dispose of it. Remove the *nut* and the sequence may be started again by threading another *extractor element* into the nose of the *puller rod*.



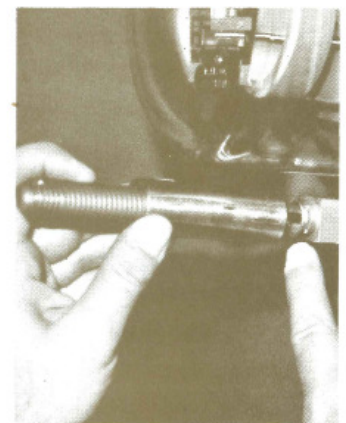
1



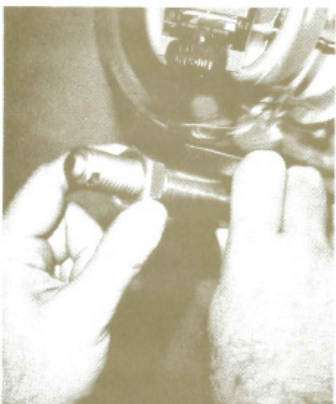
2



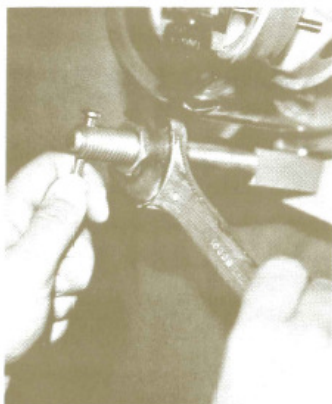
3



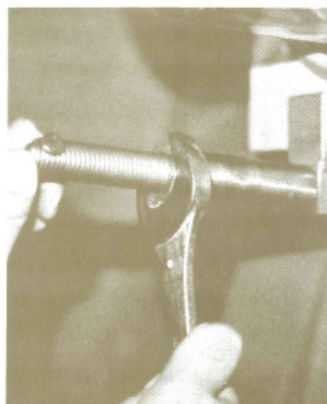
4



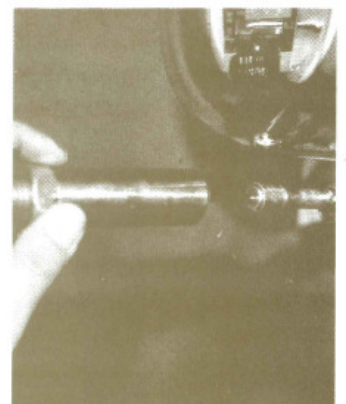
5



6



7



8